



ARCHITECTURAL
GRATES + DRAINS



SQ100AADN100Black

k

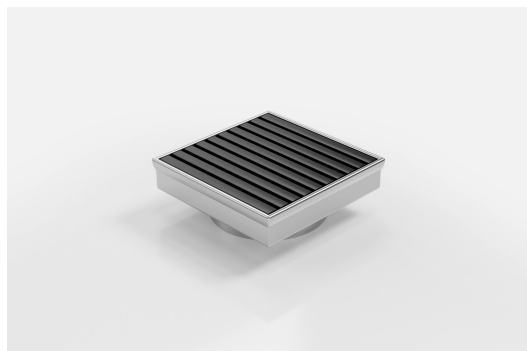
Square Floor Waste

Square Floor waste with the Stormtech Aluminium Wave design grate in Matte Black finish.

The Square Range of floor waste units allow the integration of a standard floor waste with Stormtech linear drainage.

Featuring a 316 marine grade Stainless Steel channel, the Square Range is available with all Stormtech grate designs and finishes.

Available with 89mm, 76mm or 44mm outlet.



Code SQ100AADN100Black

Range Square

Grate Style AA

Category Square Floor Waste

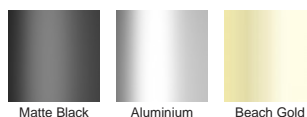
Channel Material Stainless Steel

Steel Grade 316

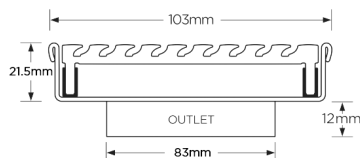
SPECIFICATIONS + DIMENSIONS

Channel Width	104mm
Channel Depth	22mm
Length(s)	103mm
Outlet Size	DN100

STORMTECH COLOUR FINISHES



Electroplate finishes subject to natural variation with time and local environment. Factors such as pools/surf beaches may require electropolishing. Contact us for suitability.



Grates longer than 1500mm supplied in sections. Tile Inserts longer than 1200mm supplied in sections. Channels over 3000mm supplied in sections with joiner. +/-2mm tolerance on dimensions.

PRODUCT APPLICATIONS

- Bathroom Drainage
- Balcony Drainage
- Commercial Drainage
- Courtyard / Patio Drainage
- Hospitality Drainage
- Shower Drainage
- Wet Area Drainage

Copyright © Stormtech Pty Ltd. Patent 733361. Drawings not to scale, please use dimensions shown. Downloaded 05/06/2026 (please check for updates)



Visit stormtech.com.au
for tools + inspiration.

Phone **1300 653 403**

Email info@stormtech.com.au