

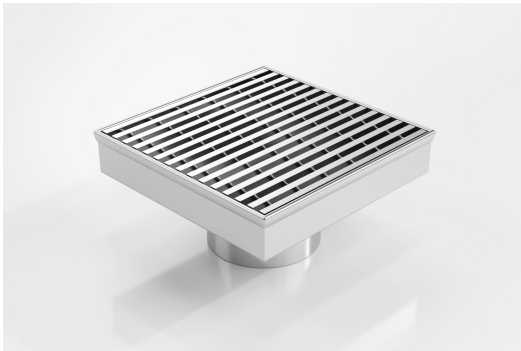


ARCHITECTURAL  
GRATES + DRAINS



# SQ150CRDN80

## Square Floor Waste



The SQ150CR is a commercial style floor waste drain.

Manufactured from 304 grade stainless steel it features a commercial style grate with a 5mm wire / 5mm gap.

Available with 89mm and 76mm outlet

**Code** SQ150CRDN80

**Range** Square

**Grate Style** CR

**Category** Square Floor Waste

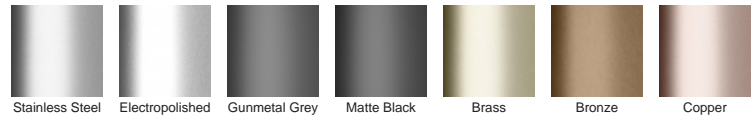
**Channel Material** Stainless Steel

**Steel Grade** 304

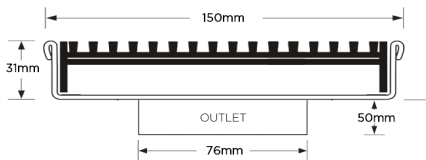
### SPECIFICATIONS + DIMENSIONS

<b>Channel Width</b>	150mm
<b>Channel Depth</b>	32mm
<b>Length(s)</b>	150mm
<b>Outlet Size</b>	DN80

### STORMTECH COLOUR FINISHES



Electroplate finishes subject to natural variation with time and local environment. Factors such as pools/surf beaches may require electropolishing. Contact us for suitability.



Grates longer than 1500mm supplied in sections. Tile Inserts longer than 1200mm supplied in sections. Channels over 3000mm supplied in sections with joiner. +/-2mm tolerance on dimensions.

### PRODUCT APPLICATIONS

- Balcony Drainage
- Commercial Drainage
- Courtyard / Patio Drainage
- Hospitality Drainage
- Paved Area Drainage

Copyright © Stormtech Pty Ltd. Patent 733361. Drawings not to scale, please use dimensions shown.  
Downloaded 18/04/2026 (please check for updates)



Visit [stormtech.com.au](http://stormtech.com.au)  
for tools + inspiration.

Phone **1300 653 403**

Email [info@stormtech.com.au](mailto:info@stormtech.com.au)