

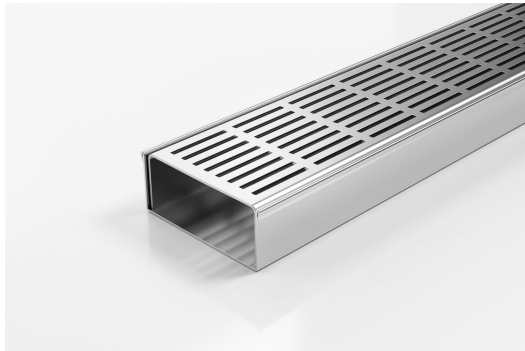


ARCHITECTURAL  
GRATES + DRAINS



# 100PSi40

## Linear Drain



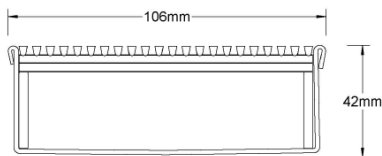
The 100PSi40 is a punched slot grate design.

This slot perforated grate manufactured from 316 marine grade stainless steel combined with stainless steel channel offers an affordable option to use the Slimline drainage system.

Stormtech Modular Kits are supplied with grate and oversized channel to be cut down on site. One piece channel comes with pre punched spigot with outlet extender (kits up to 2000mm long). Oversized channel enables choice of outlet positions: centre, end or wherever preferred. Kits over 2000mm long and kits requiring multiple outlets are supplied with outlet on joiner plate. All kits are supplied with 2x clip-on end caps.

**(Grate/Channel Lengths Provided) 900mm/1500mm, 1000mm/1500mm, 1200mm/1800mm, 1500mm/2400mm, 1800mm/3000mm, 2000mm/3000mm**

**Code** 100PSi40  
**Range** 100  
**Grate Style** PS  
**Category** Modular Kits  
**Channel Material** Stainless Steel  
**Steel Grade** 316

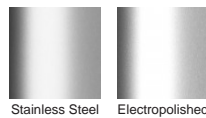


Grates longer than 1500mm supplied in sections. Tile Inserts longer than 1200mm supplied in sections. Channels over 3000mm supplied in sections with joiner. +/-2mm tolerance on dimensions.

### SPECIFICATIONS + DIMENSIONS

|                      |                               |        |        |        |
|----------------------|-------------------------------|--------|--------|--------|
| <b>Channel Width</b> | 106mm                         |        |        |        |
| <b>Channel Depth</b> | 42mm                          |        |        |        |
| <b>Length(s)</b>     | 1000mm                        | 1500mm | 2000mm | 2500mm |
|                      | 3000mm                        | 3500mm | 4000mm | 4500mm |
|                      | 5000mm                        | 5500mm | 6000mm |        |
| <b>Outlet Size</b>   | DN40, DN50, DN65, DN80, DN100 |        |        |        |

### STORMTECH COLOUR FINISHES



Electroplate finishes subject to natural variation with time and local environment. Factors such as pools/surf beaches may require electropolishing. Contact us for suitability.

### PRODUCT APPLICATIONS

|                             |                            |
|-----------------------------|----------------------------|
| Bathroom Drainage           | Hospitality Drainage       |
| Aged / Health Care Drainage | Paved Area Drainage        |
| Balcony Drainage            | Shower Drainage            |
| Commercial Drainage         | Multi-Residential Drainage |
| Courtyard / Patio Drainage  | Special Needs Drainage     |
| Pool and Spa Area Drainage  | Threshold Drainage         |

Copyright © Stormtech Pty Ltd. Patent 733361. Drawings not to scale, please use dimensions shown. Downloaded 18/04/2026 (please check for updates)



Visit [stormtech.com.au](http://stormtech.com.au)  
for tools + inspiration.

Phone **1300 653 403**

Email [info@stormtech.com.au](mailto:info@stormtech.com.au)