

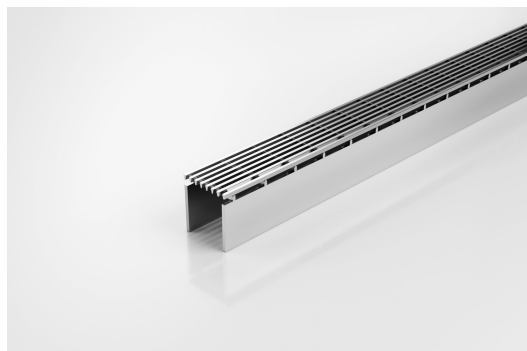


ARCHITECTURAL  
GRATES + DRAINS



# 38AR40

## Linear Drain



This is our premium architectural grate for use with the 38G90 and 38G100 Special Assembly drain.

A 38mm wide UPVC channel is connected via downpipes at 200mm intervals to sockets in a 90mm or 100mm drain below. This allows the channel to be installed level while the drainpipe is given sufficient fall to be self-cleaning.

Please be aware that depending on the installation environment, for a pool installation or close to a surf beach, you may need to have your stainless steel grates electropolished.

This unique drainage system was recognised for its innovation by a DesignMark at the Australian International Design Awards.

**Code** 38AR40

**Range** Special Assembly

**Grate Style** AR

**Category** Components

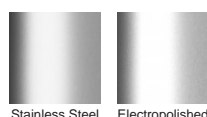
**Channel Material** Stainless Steel

**Steel Grade** 316

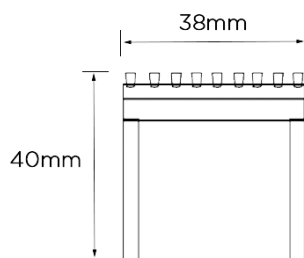
### SPECIFICATIONS + DIMENSIONS

<b>Channel Width</b>	38mm
<b>Channel Depth</b>	40mm
<b>Length(s)</b>	1200mm 1500mm
<b>Outlet Size</b>	N/A

### STORMTECH COLOUR FINISHES



Electroplate finishes subject to natural variation with time and local environment. Factors such as pools/surf beaches may require electropolishing. Contact us for suitability.



Grates longer than 1500mm supplied in sections. Tile Inserts longer than 1200mm supplied in sections. Channels over 3000mm supplied in sections with joiner. +/-2mm tolerance on dimensions.

### PRODUCT APPLICATIONS

- |                            |                         |
|----------------------------|-------------------------|
| Bathroom Drainage          | Shower Drainage         |
| Balcony Drainage           | Special Needs Drainage  |
| Commercial Drainage        | Threshold Drainage      |
| Courtyard / Patio Drainage | Suspended Slab Drainage |
| Pool and Spa Area Drainage | Wet Area Drainage       |
| Paved Area Drainage        |                         |

Copyright © Stormtech Pty Ltd. Patent 733361. Drawings not to scale, please use dimensions shown. Downloaded 18/04/2026 (please check for updates)



Visit [stormtech.com.au](http://stormtech.com.au)  
for tools + inspiration.

Phone **1300 653 403**

Email [info@stormtech.com.au](mailto:info@stormtech.com.au)