

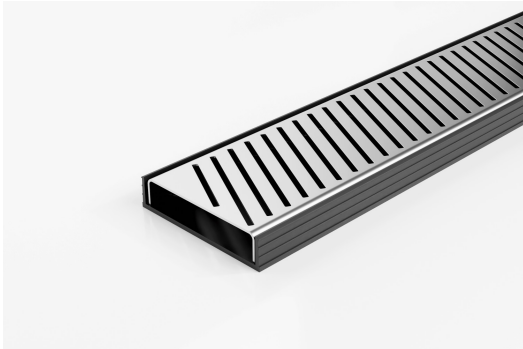


ARCHITECTURAL  
GRATES + DRAINS



# 100PASGBL20

## Linear Drain



**100mm Wide Punched Angle Slot Perforated Stainless Steel Grate with a black uPVC Channel.**

The 100PASG20 slot perforated grate is manufactured from 316 marine grade stainless steel combined with a UPVC drainage channel and offers an affordable option to use the Slimline system.

Kits longer than 3000mm available on request.

Black uPVC channel only suitable for Internal use only

**Code** 100PASGBL20

**Range** 100

**Grate Style** PAS

**Category** Modular Kits

**Channel Material** uPVC

**Steel Grade** 316

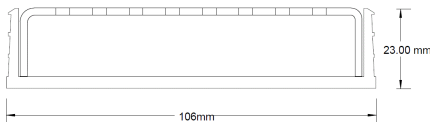
### SPECIFICATIONS + DIMENSIONS

<b>Channel Width</b>	106mm
<b>Channel Depth</b>	23mm
<b>Length(s)</b>	900mm 1000mm 1200mm 1500mm 1800mm 2000mm 2200mm 2400mm 2500mm 2700mm 3000mm
<b>Outlet Size</b>	DN80, DN100

### STORMTECH COLOUR FINISHES



**Electroplate finishes subject to natural variation with time and local environment. Factors such as pools/surf beaches may require electropolishing. Contact us for suitability.**



Grates longer than 1500mm supplied in sections. Tile Inserts longer than 1200mm supplied in sections. Channels over 3000mm supplied in sections with joiner. +/-2mm tolerance on dimensions.

### PRODUCT APPLICATIONS

- |                             |                            |
|-----------------------------|----------------------------|
| Bathroom Drainage           | Hospitality Drainage       |
| Aged / Health Care Drainage | Paved Area Drainage        |
| Balcony Drainage            | Shower Drainage            |
| Commercial Drainage         | Multi-Residential Drainage |
| Courtyard / Patio Drainage  | Special Needs Drainage     |
| Pool and Spa Area Drainage  | Wet Area Drainage          |

Copyright © Stormtech Pty Ltd. Patent 733361. Drawings not to scale, please use dimensions shown. Downloaded 18/04/2026 (please check for updates)



Visit [stormtech.com.au](http://stormtech.com.au)  
for tools + inspiration.

Phone **1300 653 403**

Email [info@stormtech.com.au](mailto:info@stormtech.com.au)