

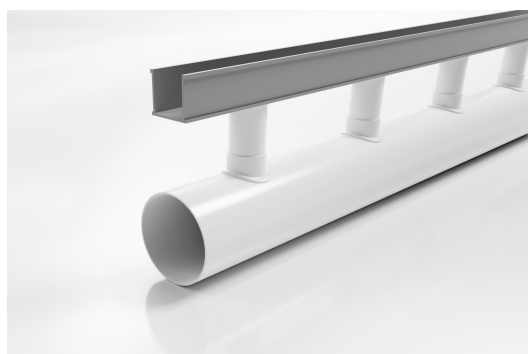


ARCHITECTURAL
GRATES + DRAINS



38G100

Linear Drain



The Special Assembly range was developed for outdoor applications with high capacity drainage needs.

The 38G100 provides flexibility in landscape and pool design featuring a 46mm wide top drainage channel connected via downpipes at 200mm intervals to a 100mm drain pipe below. Suits a 38mm wide grate, sold separately.

Please note stainless steel grates to complement this system are separate items

Code 38G100

Range Special Assembly

Category Modular Kits

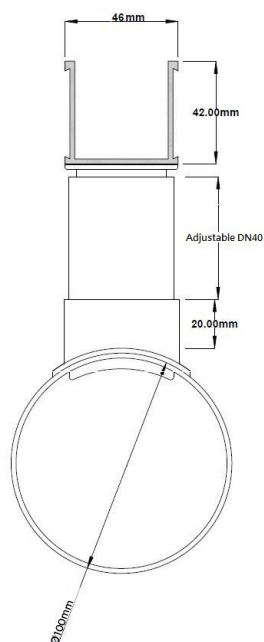
Channel Material uPVC

SPECIFICATIONS + DIMENSIONS

Channel Width	46mm
Channel Depth	42mm
Length(s)	3000mm
Outlet Size	N/A

PRODUCT APPLICATIONS

- Balcony Drainage
- Commercial Drainage
- Courtyard / Patio Drainage
- Driveway Drainage
- Pool and Spa Area Drainage
- Paved Area Drainage
- Suspended Slab Drainage



Copyright © Stormtech Pty Ltd. Patent 733361. Drawings not to scale, please use dimensions shown. Downloaded 18/04/2026 (please check for updates)

Grates longer than 1500mm supplied in sections. Tile Inserts longer than 1200mm supplied in sections. Channels over 3000mm supplied in sections with joiner. +/-2mm tolerance on dimensions.



Visit stormtech.com.au
for tools + inspiration.

Phone **1300 653 403**

Email info@stormtech.com.au